

# Probabilistic Turnout Report for Upcoming elections

# ANES 1952-2008

- So far as you know now, do you expect to vote in the national elections this coming November or not? (Yes / No)

# 2012 Time Series

- How likely is it that you will vote in the general election this November?
  - \_\_\_ Extremely likely
  - \_\_\_ Very likely
  - \_\_\_ Moderately likely
  - \_\_\_ Slightly likely
  - \_\_\_ Not likely at all

# 2012 Time Series

- How likely is it that you will vote in the general election this November?
  - \_\_\_ Extremely likely (68%)
  - \_\_\_ Very likely (11%)
  - \_\_\_ Moderately likely (6%)
  - \_\_\_ Slightly likely (4%)
  - \_\_\_ Not likely at all (10%)

# 2012 Time Series

- What is the percent chance that you will vote in the general election this November? You can answer with any number between 0 and 100 where 0 means no chance, 45-55 means a fairly even chance, and 100 means you are absolutely certain.

# 2012 EGSS

- What is the percent chance that you will vote in the election for President of the United States in 2012?

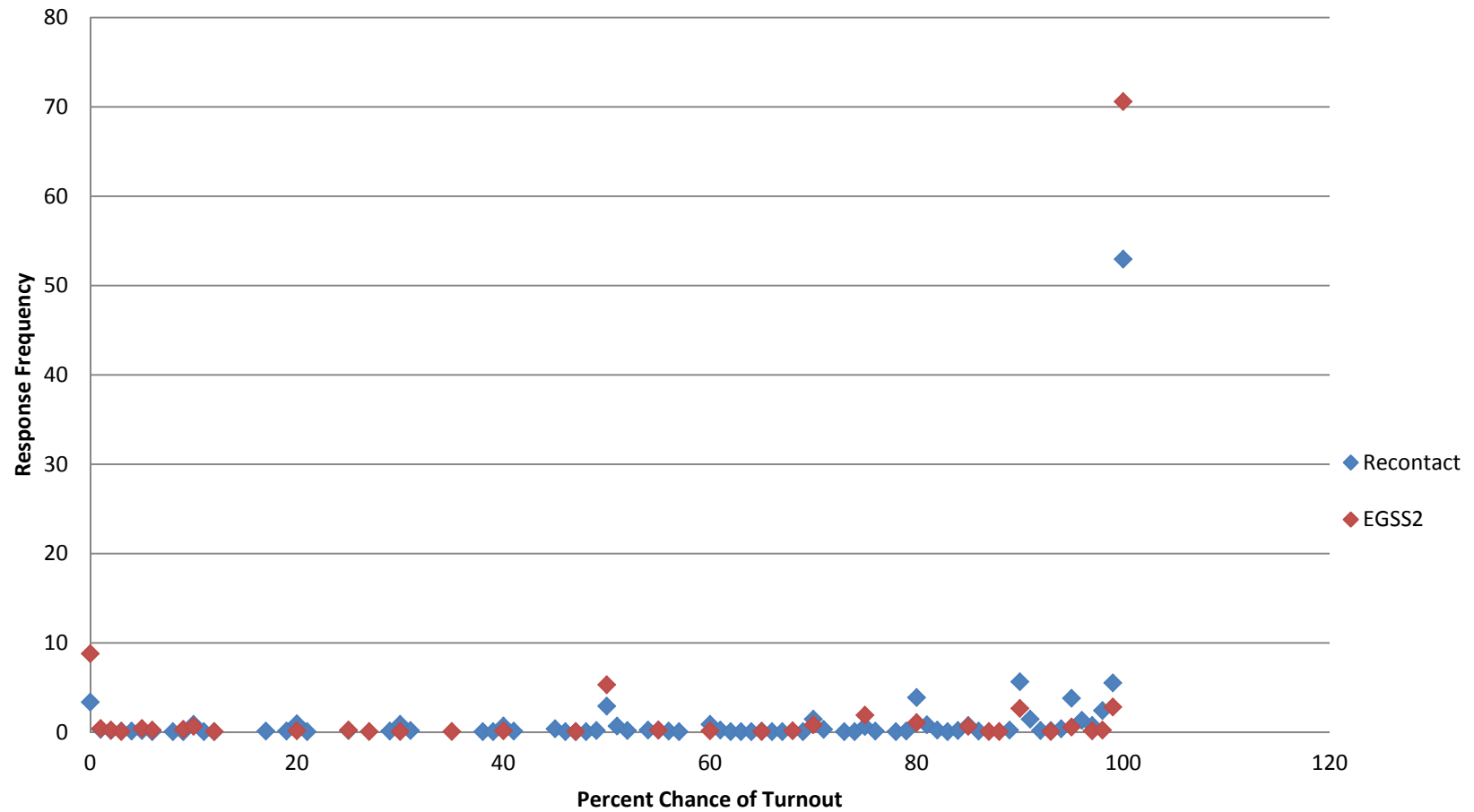
Please enter a number from 0 to 100.

# 2012 EGSS

- What is the percent chance that you will vote in the Congressional elections this November? The percent chance can be thought of as the number of chances out of 100. You can use any number between 0 and 100. For example, numbers like 2 and 5 percent may be “almost no chance,” 20 percent or so may mean “not much chance,” a 45- or 55-percent chance may be a “pretty even chance,” 80 percent or so may mean a “very good chance,” and a 95- or 98-percent chance may be “almost certain.”

What is the percent chance that you will vote in the Congressional elections this November?

# EGSS Responses

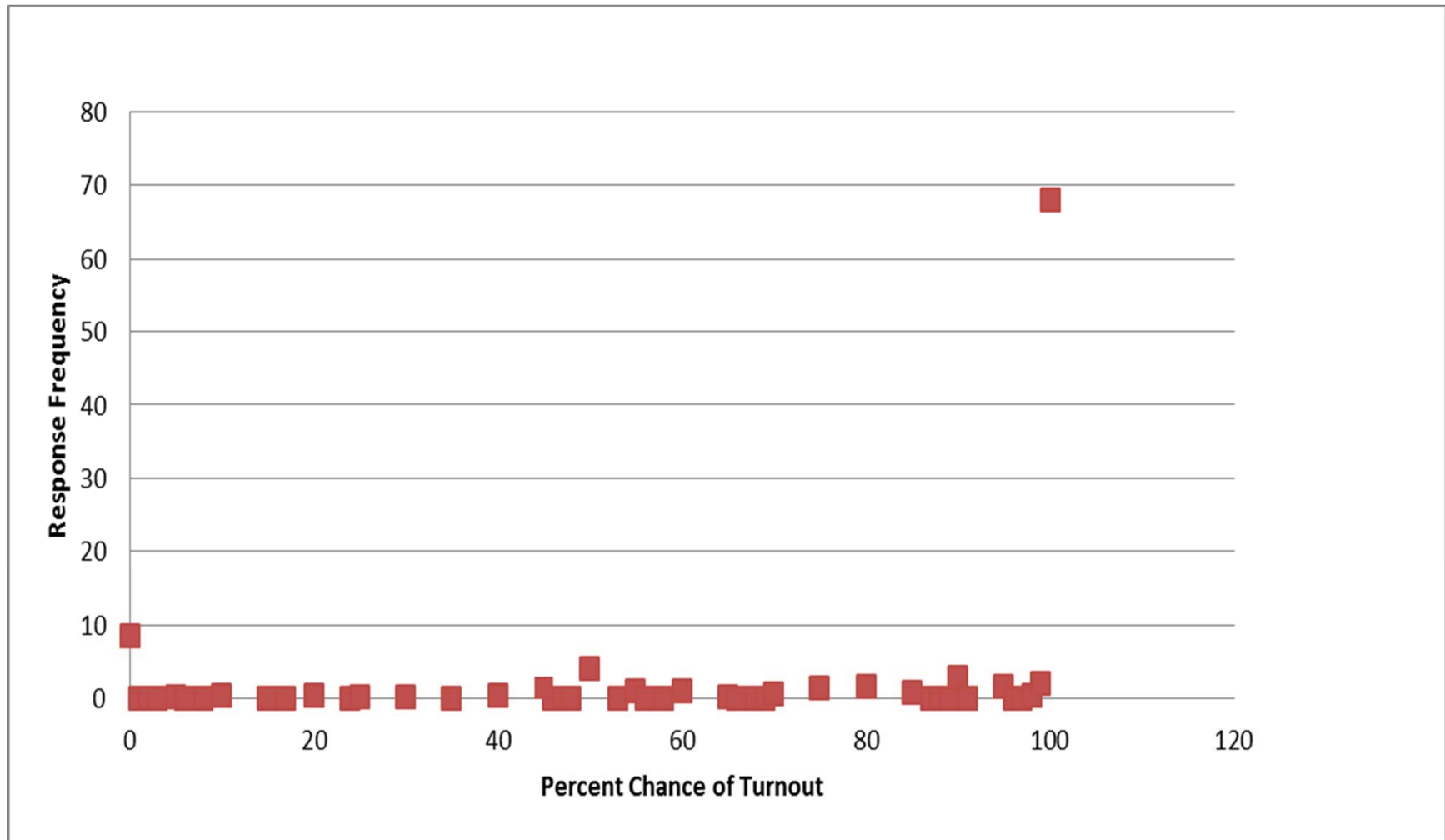




# 2012 Time Series

- What is the percent chance that you will vote in the general election this November? You can answer with any number between 0 and 100 where 0 means no chance, 45-55 means a fairly even chance, and 100 means you are absolutely certain.

# 2012 Time Series Responses



# Categorical Question and Probabilistic Responses, Reported Turnout

<b>Verbal Response</b>	<b>Percent Probability Response</b>		<b>Reported Turnout Rate</b>	
	<i>Mean</i>	<i>St Error</i>	<i>Percent</i>	<i>St Error</i>
<i>Extremely Likely</i>	98.1	0.24	94.3	0.53
<i>Very Likely</i>	86.5	0.93	70.3	2.60
<i>Moderately Likely</i>	61.2	1.66	48.6	4.01
<i>Slightly Likely</i>	43.9	2.61	25.9	4.21
<i>Not at All Likely</i>	10.9	1.61	7.7	1.68

# Expected Probabilities of Turnout and Mean Reported Turnout

<b>Reported Probability</b>	<b>Mean Reported</b>	<b>Standard Error</b>
100	94.1	5.29
95-99	90.6	2.24
90-94	67.0	5.22
80-89	53.8	6.10
70-79	52.6	6.96
50-69	43.4	3.79
30-49	24.7	4.84
10-29	28.6	7.47
1-9	7.5	5.56
0	6.9	1.59